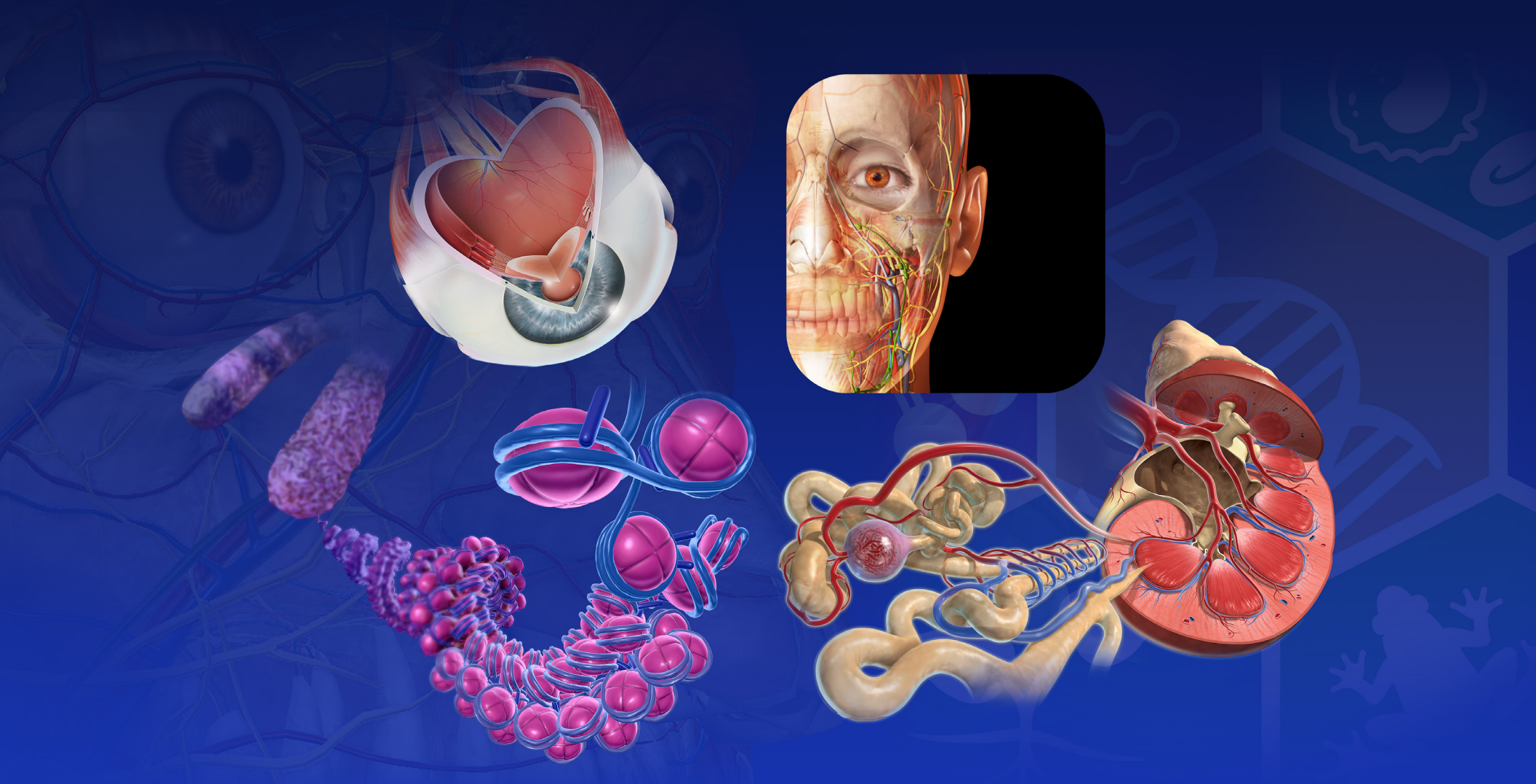
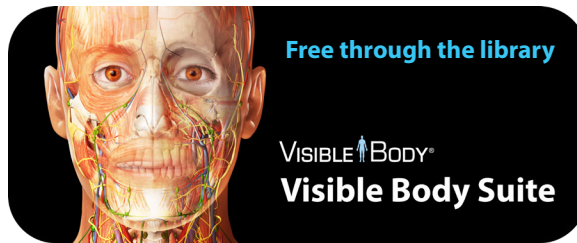


VISIBLE  BODY® Visible Body Suite

Getting Started Guide

Spring 2024

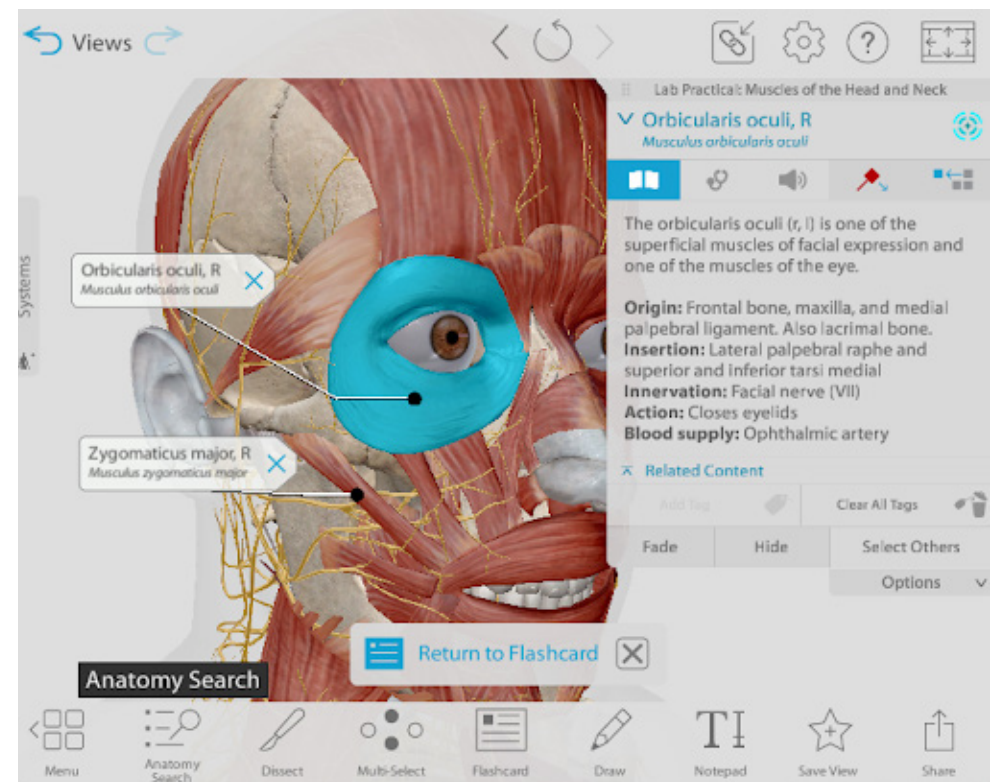




About this guide

This guide is for educators and students at institutions with a site license to VB Suite.

About VB Suite	1
Visual assets in VB Suite	2
Access	3
Rotate Zoom Dissect	4
Access detailed information	5



★★★★★

The ease of look up and viewing anatomy is amazing!! Its a quick learn of how to navigate..handy tool for showing clients anatomy.



VISIBLE BODY®

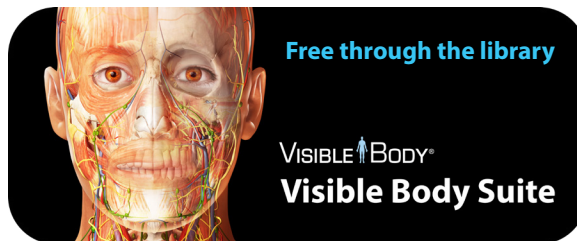
Visible Body Suite

Everything you need to learn A&P and biology

- Full 3D female and male dissectible models
- Short videos and 3D tours on normal function and common conditions
- Self-paced A&P bootcamp and 3D flashcards for studying
- Access on web and mobile devices

[Preview content](#)





Get 20K visual assets For health science students

Gross Anatomy: Virtual Cadavers

- Complete dissectible male and female 3D models
- Dozens of cross-sectional 3D models paired with MRI and CT scans

Preview video

Muscle/Bone/Nerve Specialty Models

- 70 fully interactive moving muscle action models
- Male & female 3D dermatome maps
- Detailed bone models with 1k+ landmarks
- 3D brain map depicting functional areas
- 3D microanatomy models of skeletal muscle, peripheral nerve, spinal cord, and meninges
- 3D pathology models (including Alzheimer's Disease, MS, and bacterial meningitis)

Preview video

3D Dental Specialty Models

- Upper and lower arches
- Maps showing cusps and surfaces
- Oral region cross-sections
- Moving model of mandible
- Microanatomy of molar, premolar, canine, and incisor

Preview video

General Physiology

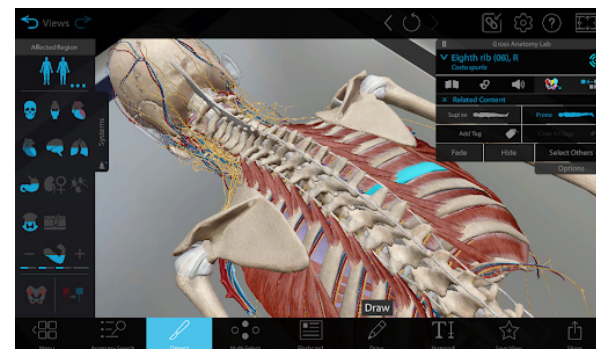
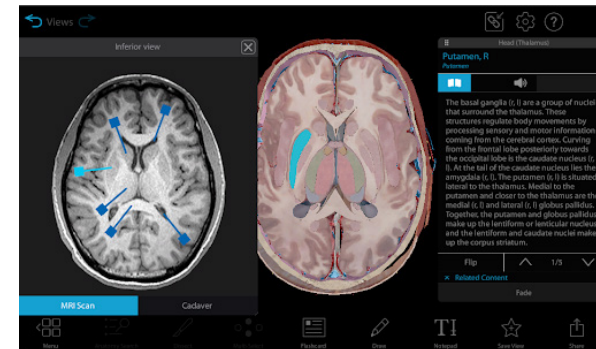
- 3D beating heart with adjustable heart rate, conduction, and ECG
- 3D microanatomy models of tissues and organs, including nephrons and alveoli
- 100+ physiology animations
- 95 illustrations of common processes

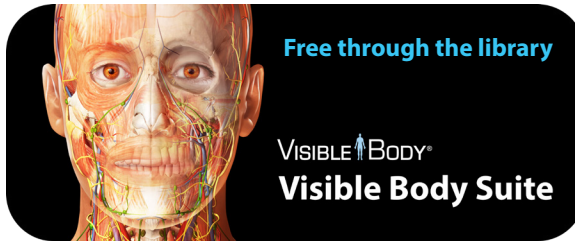
Preview video



Pathology and Common Conditions

- 50+ common pathology presentations and animations
- 3D models of common musculoskeletal conditions and sports injuries
- 3D models of common internal medicine conditions (including atherosclerosis and kidney stones)





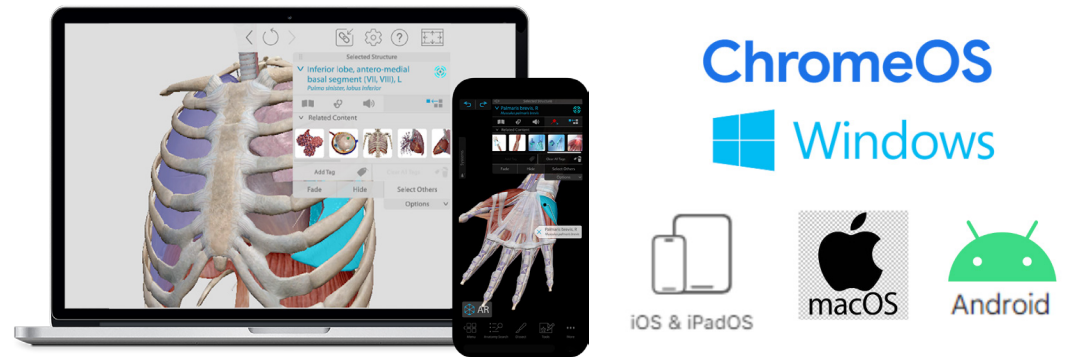
Access more than 20K life science models on your laptop or phone!

Here's how to do that:

1. Connect to the school's WiFi
or
Log in through the school's proxy
2. Visit websuite.visiblebody.com
3. Create an account

No software to install for web access

Link an email address with your school's subscription and sign in at websuite.visiblebody.com from any location.



Study anywhere and anytime!

Download to your mobile device and sign in.



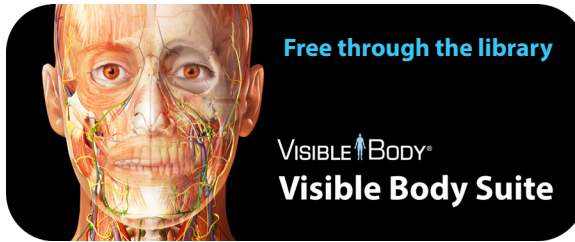
Download on the
App Store



GET IT ON
Google Play

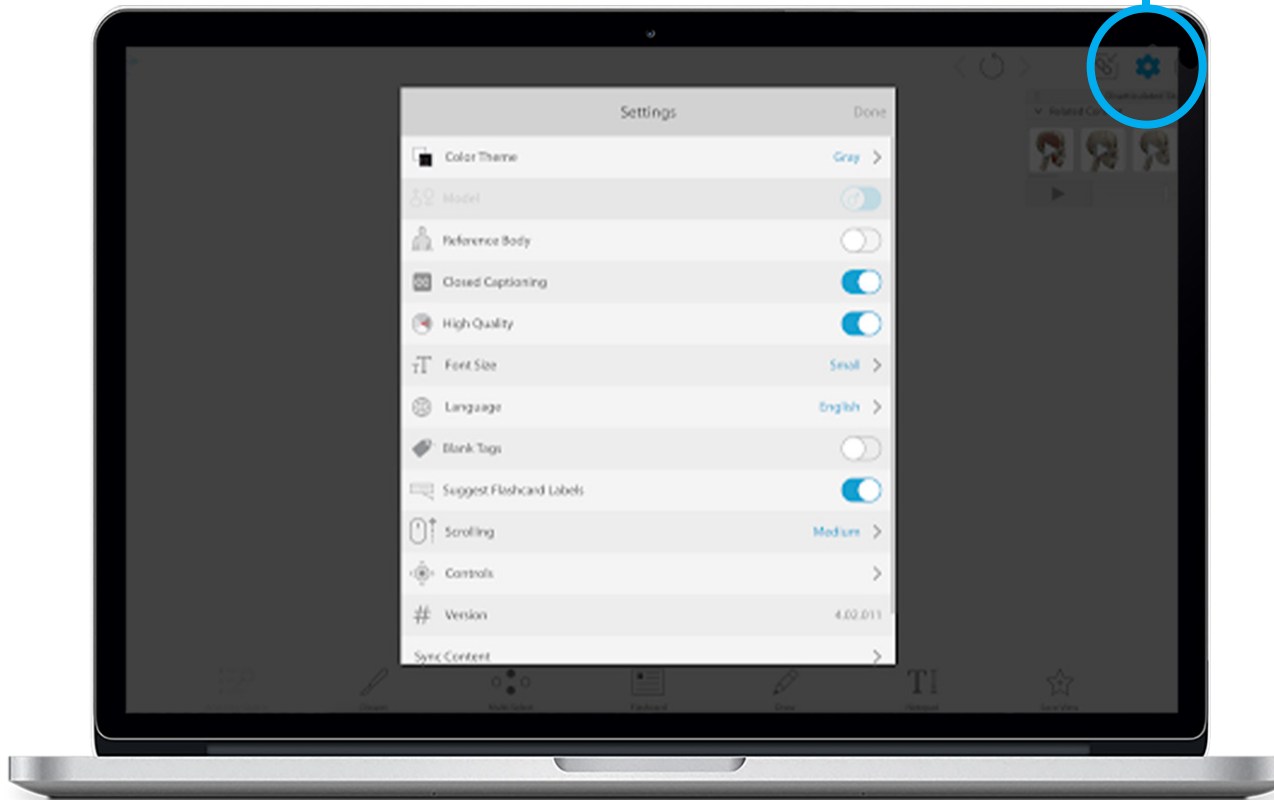
No internet needed after sign in.

Details at visiblebody.com/help/vbsuite



Use the settings menu to choose your preferences!

Lots of options from the settings menu:

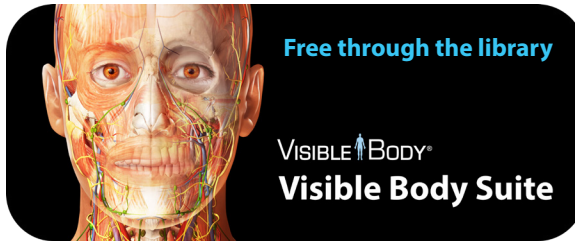


Female and male anatomy models
Switch back and forth as you study.

Switch between 7 languages
No need to re-launch.

Choose accessibility preferences

- Background colors
- Mouse and keyboard controls
- Closed captioning
- Font size
- Limited bandwidth and older phone performance setting



Find the content you need.

[Preview video](#)

The screenshot shows the Visible Body Suite interface. At the top is a navigation bar with icons for Home, Search, Spotlight, Study, and My Library. Below this is a welcome message: "Welcome! Choose a topic of interest." The main content area is divided into several sections. A yellow box labeled '1' highlights the "Anatomy Reference" section, which includes "Human Anatomy" and "Muscles & Kinesiology". Another yellow box labeled '2' highlights the "Content Search" section at the bottom. A yellow box labeled '3' highlights the "Spotlight" icon in the navigation bar. A yellow box labeled '4' highlights the "Study" icon in the navigation bar. A yellow box labeled '5' highlights the "My Library" icon in the navigation bar. The bottom of the interface has a footer with icons for a grid, a hand, settings, help, and a notification bell.

Home

Search

Spotlight

Study

My Library

Welcome! Choose a topic of interest.

1

Anatomy Reference

Human Anatomy
Explore general anatomy, functional units, cross sections, muscle attachments, bony landmarks, muscle actions, and more.

Muscles & Kinesiology
Interact with 3D models of muscle actions and access detailed information on innervation and blood supply.

Physiology & Pathology

Physiology & Pathology
What happens when something goes wrong? Explore models and animations of the most common pathologies.

Biology

Biology
Learn about cells, DNA, photosynthesis, cellular respiration, animals, evolution, plants, and other introductory topics.

2

Content Search

Search for something specific
Know exactly what you are looking for? Find it fast using Content Search.

3

4

5

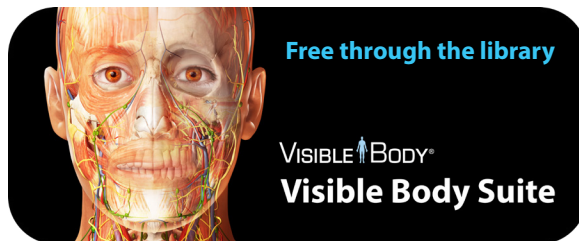
1. Choose a topic to browse

2. Use Content Search to find specific content

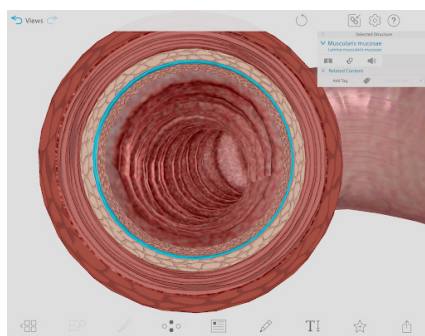
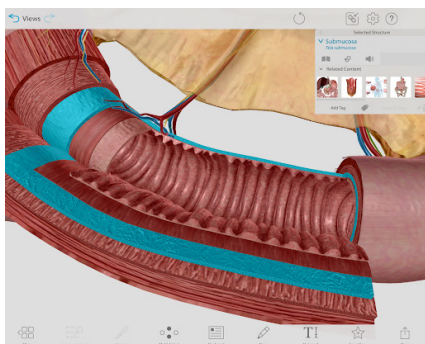
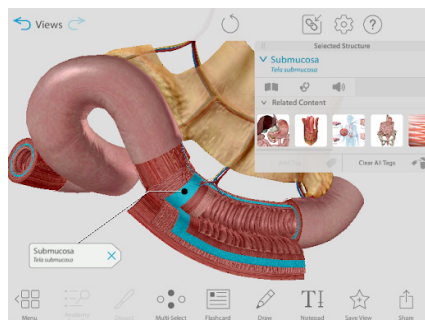
3. Browse Spotlight for the latest content

4. Use the Study section to get quizzes, flashcards, and labs

5. Save favorites in My Library



Watch an overview



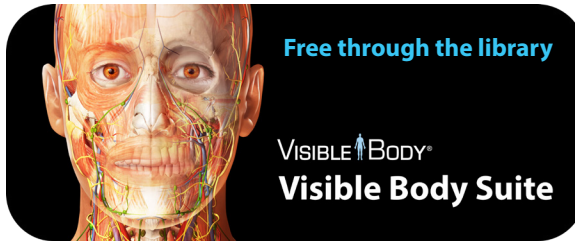
VISIBLE BODY®

Move and zoom the on-screen 3D models

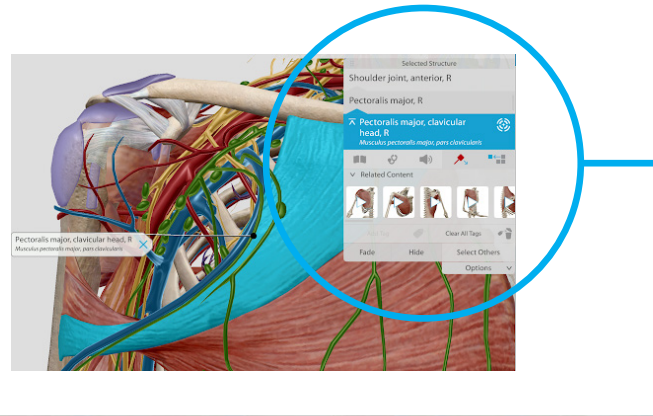
Details at

visiblebody.com/help/vbsuite

	Mouse	Touchscreen	On Screen Joystick	Keyboard
Move model around the screen	Hold down mouse wheel or right click while moving the mouse 	Two finger drag 	Click or click and hold down arrows 	Use W, S, A, and D keys OR Hold down spacebar while dragging the mouse
Rotate the model	Left click while moving the mouse 	Tap and drag 	Click and hold down center joystick while moving the mouse 	Use the arrow keys OR Hold down x or y key and click on the model while dragging the mouse
Zoom in and out of the model	Scroll the mouse wheel 	Pinch 	Click on - or + OR Click on and drag the bar 	Use the - and + keys
Reset rotation point	Double-click on the model 	Double-tap 		
Select a model to see related content	Click on the model 	Tap 		Select H to hide/show Select V to fade/show



Select a structure and learn!



Selected Structure

Shoulder joint, anterior, R

Pectoralis major, R

Pectoralis major, clavicular head, R

Musculus pectoralis major, pars claviculæ

Related Content

More detailed models

Related models

Name

Definition

Common conditions

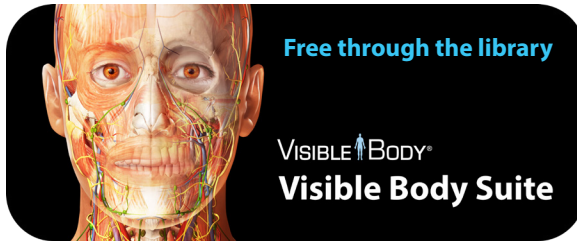
Pronunciation

Anatomical group

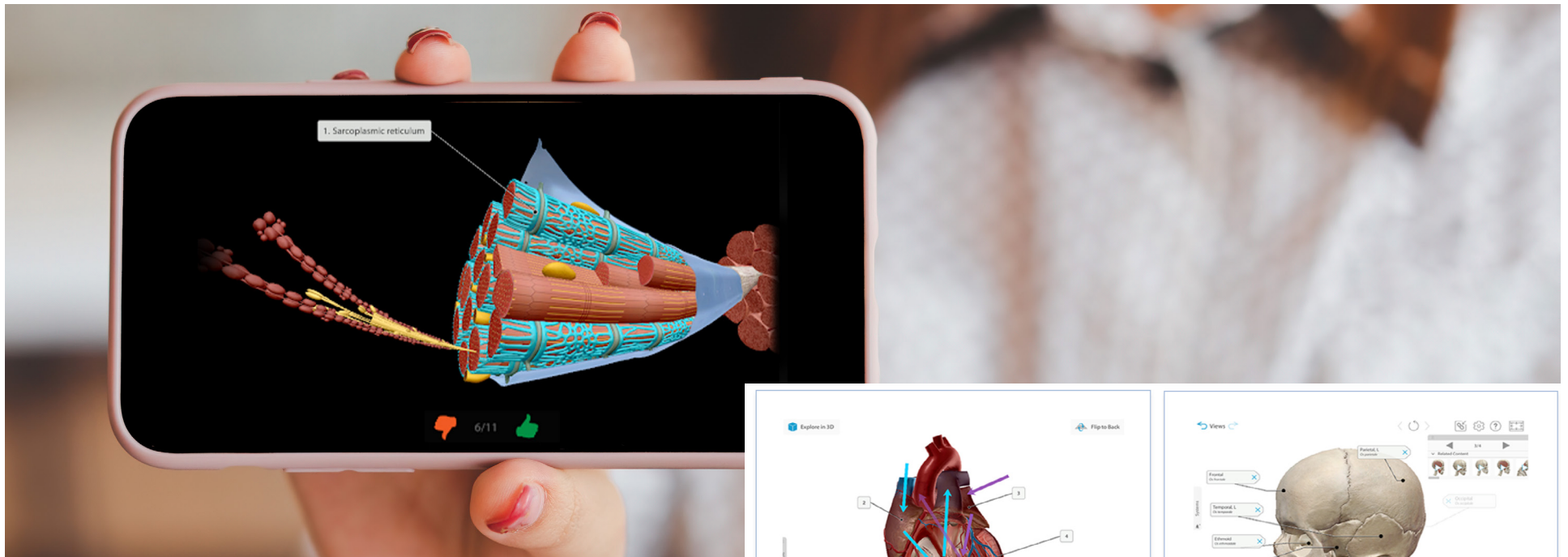
More detailed models

Related models

Details at
visiblebody.com/help/vbsuite



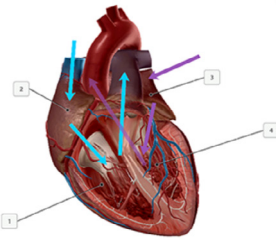
Download the study guides you need to succeed.



Study faster, study better



Explore in 3D

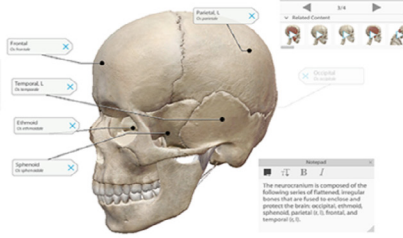


Flashcard Decks

Access hundreds of free interactive Flashcard decks that cover key course topics.

visiblebody.com/flashcards

Views



3D Tours

Subscribe to get Tours! These premade 3D presentations are available to all VB Suite subscribers. Once you have an account, you can get any premade Tour.

visiblebody.com/tours